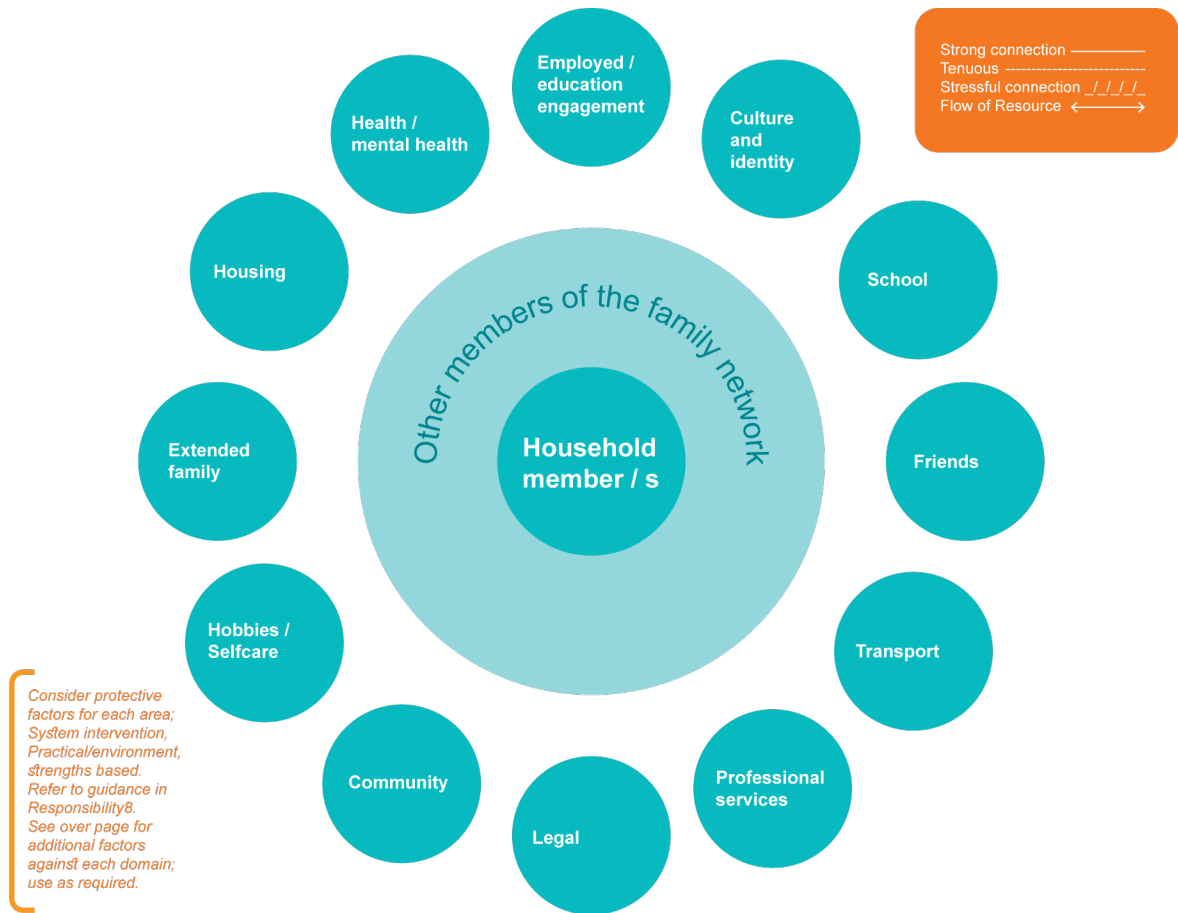


Ecomap Diagram



Protective factors and risk management – areas for discussion	
Protective factor domains	Factors
Systems intervention	Legal or Justice responses in place: <ul style="list-style-type: none"> perpetrator is incarcerated or prevented from contact victim survivor is on the Victims Register court dates noted relating to family law, family violence or other matters involving perpetrator or victim survivor Justice interventions in place (IVO)
	Perpetrator is actively linked to a support program
Practical/ environmental	Safe housing
	Financial security (access to money or employment)
	Health (including mental health)
	Education (access or engagement with)
	Immigration issues

	Food security
	Transport
	Telecommunication safety
	Connection to advocacy/ professional/ therapeutic services
	Positive and friendly care environment (particularly for children and young people)
Strengths-based	Social networks, health relationships
	Culture and identity, connection and sense of belonging to community
	An individual's personal skills and emotional resilience, exercise of agency